

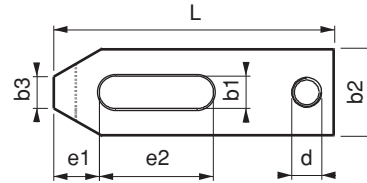
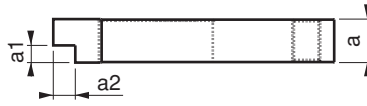
Kademeli Destek Delikli Düz Pabuç

Straight Clamp with Stepped Support Hole

Referans Nr.	L	b1	metrik		a	b2	a1xa2	b3	e1	e2	d	(g)
			metrik	whitworth								
1370-10080	80	11	M10	3/8	15	30	5x8	12	15	30	M10	180
1370-12100	100	14.5	M12-14	1/2	20	40	8x10	14	21	40	M12	410
1370-12125	125											590
1370-16125	125	18.5	M16-18	5/8	25	50	10x12.5	18	26	45	M16	910
1370-16160	160											1180
1370-20160	160	22.5	M20-22	3/4	30	60	12x15	22	30	60	M20	1575
1370-20200	200											2150
1370-24160	160	26	M24	1	30	70	12x15	26	35	60	M24	1800
1370-24200	200											2875
1370-24250	250											3500

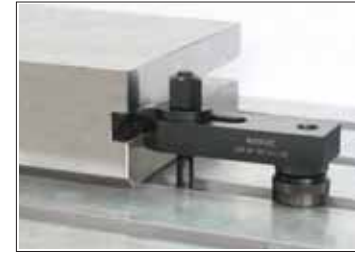
Ürün Nr. 1370 Kademeli Destek Delikli Düz Pabuç

- Kısıtlı alanlarda yükseklikten kazanma amaçlı kullanılır.
- Malzeme Ck45 DIN
- Sertlik 32-40 HRC
- Siyah Kaplama



Product Nr. 1370 Straight Clamp with Stepped Support Hole

- This product is used in restricted areas with the purpose of gaining height
- Material Ck45 DIN
- Hardness 32-40 HRC
- Black Coating



Referans Nr.	L	b1	metrik		a	b2	b3	b4	(g)
			metrik	whitworth					
1390-06060	60	6.6	M6	1/4	12	19	6.2	3	65
1390-08080	80	9	M8	5/16	15	25	8	4	140
1390-10100	100	11	M10	3/8	20	30	9.5	5	240
1390-12125	125	14.5	M12-M14	1/2	25	38	12	6	700
1390-12160	160								915
1390-12200	200	18.5	M16-M18	5/8	27	48	15	8	1235
1390-16160	160								945
1390-16200	200	22.5	M20-M22	3/4	37	52	15	10	1650
1390-16250	250								2765
1390-20200	200	26	M24	1	37	66	20	10	3510
1390-20250	250								3510
1390-20315	315	33	M30	11/4	47	73	20	12	7200
1390-20500	500								7100
1390-24200	200	40	M36	11/2	47	73	20	12	2260
1390-24250	250								2740
1390-24315	315	43	M42	11/2	57	93	30	12	3515
1390-24500	500								7100
1390-30250	250	40	M36	11/2	47	73	20	12	3500
1390-30315	315								4190
1390-30400	400	600	M36	11/2	46	73	20	12	5735
1390-30600	600								8455
1390-301000	1000	600	M36	11/2	57	93	30	12	28000
1390-36400	400								10800
1390-36600	600	43	M42	11/2	77	123	40	12	16500
1390-42600	600								28800

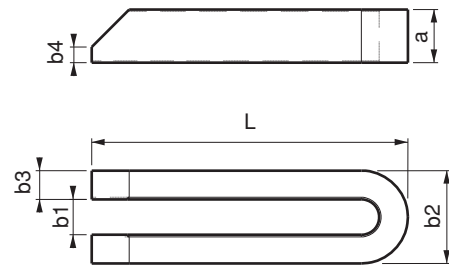
DIN 6315B

Ürün Nr. 1390 Çatal Pabuç

- Kademeli yüzeylerde şekilli iş parçalarının bağlanmasında pabuçun yapısı itibarı ile kolaylık sağlar
- Malzeme Ck45 DIN
- Sertlik 32-40 HRC
- Siyah Kaplama

Product Nr. 1390 Bifurcated Clamp

- Due to the structure of the clamp, this product provides convenience for the couplings of formed work pieces on graded surfaces
- Material Ck45 DIN
- Hardness 32-40 HRC
- Black Coating



Çatal Pabuç

Bifurcated Clamp

