

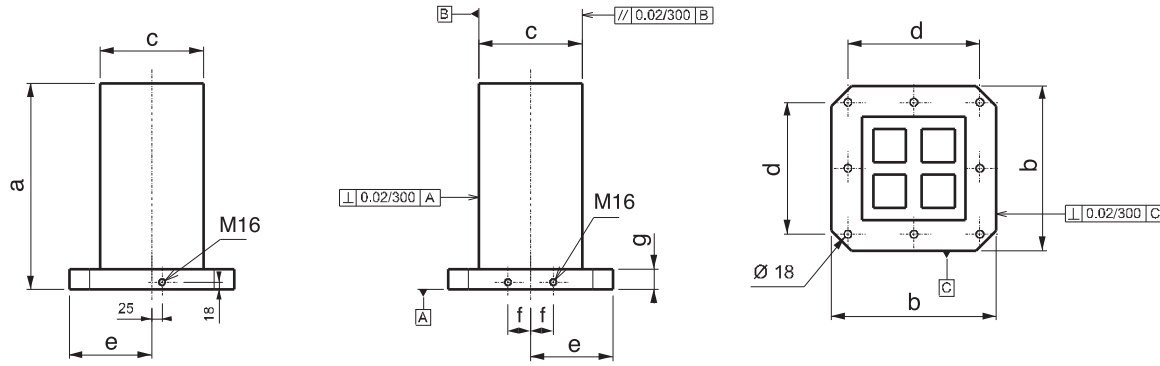
Referans Nr.	a	b	c	d	e	f	g	(kg)
2610-400250	500	400	250	320	200	55	50	180
2610-500300	600	500	300	400	250	75	50	240
2610-630350	700	630	350	500	315	100	50	390

Ürün Nr. 2610 Yatay İşleme Kulesi (Kare)

- İsteğe göre uygulama yapılabilmesi için yüzeyler deliksizdir.
- Malzeme GG 26 DIN normalize edilmiştir.

Product Nr. 2610 Horizontal Processing Cube (Square)

- Application on the surface according to desired way.
- Material is normalized as GG 26 DIN.



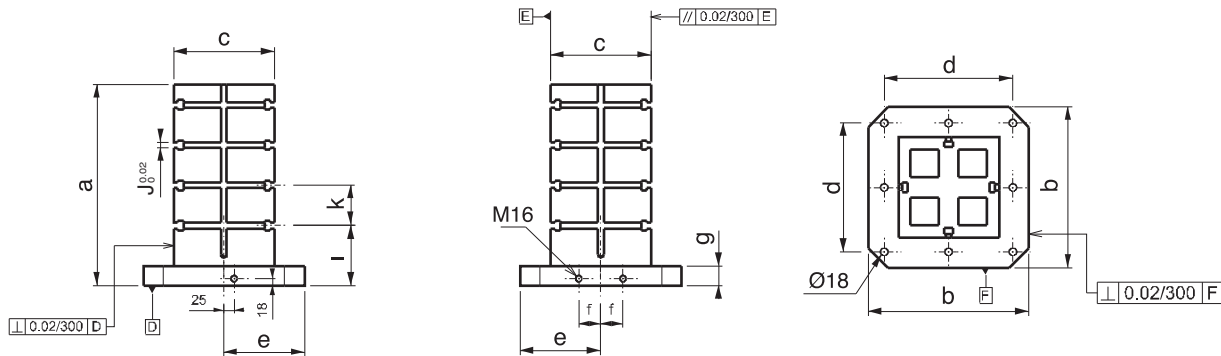
Referans Nr.	a	b	c	d	e	f	g	i	k	J (0,02)	(kg)
2630-40025014	500	400	250	320	200	55	50	150	100	14	165
2630-50030014	600	500	300	400	250	75	50	150	100	14	227
2630-63035014	700	630	350	500	315	100	50	150	125	14	375
2630-40025018	500	400	250	320	200	55	50	150	100	18	155
2630-50030018	600	500	300	400	250	75	50	150	100	18	223
2630-63035018	700	630	350	500	315	100	50	150	125	18	370

Ürün Nr. 2630 Yatay İşleme Kulesi (Kare) "T" Kanallı

- Dört yüzeyine iş parçası bağlanabilir.
- Standart bağlama ekipmanlarına uyumludur.
- "T" kanal ölçüsü 14mm - 18mm DIN 650 standartındadır.
- Malzeme GG 26 DIN normalize edilmiştir.

Product Nr. 2630 Horizontal Processing Cube (Square) with "T" Slot

- Workpiece can be applied on four faces.
- It is in compliance with Standard Coupling Equipment.
- "T" Slot is in the standard of 14mm - 18mm DIN 650.
- Material is normalized as GG 26 DIN.



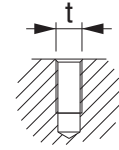
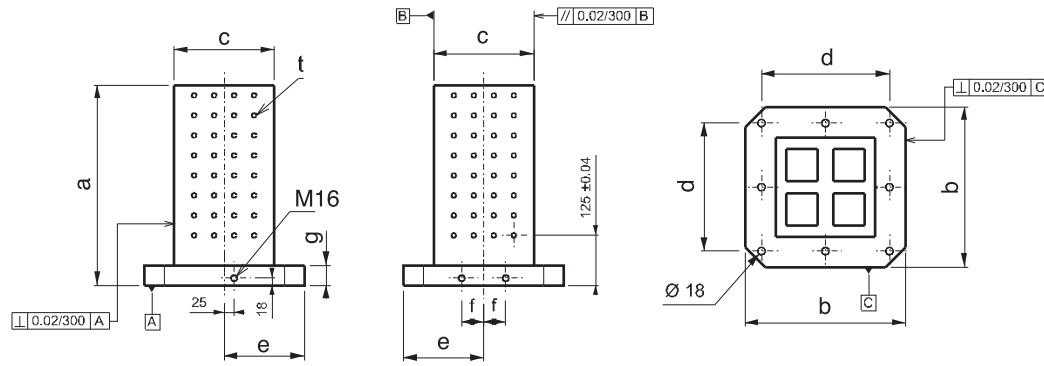
Referans Nr.	a	b	c	d	e	f	g	t	(kg)
2650-40025012	500	400	250	320	200	55	50	M12	170
2650-50030012	600	500	300	400	250	75	50	M12	230
2650-63035012	700	630	350	500	315	100	50	M12	380
2650-40025016	500	400	250	320	200	55	50	M16	168
2650-50030016	600	500	300	400	250	75	50	M16	228
2650-63035016	700	630	350	500	315	100	50	M16	376

Ürün Nr. 2650 Yatay İşleme Kulesi (Kare) Delikli

- Malzeme GG 26 DIN normalize edilmiştir.
- Dört yüzeyine iş parçası bağlanabilir.
- Standart bağlama ekipmanlarına uyumludur.
- Her yüzeye M12 - M16 diş merkez aralığı 50mm ±0.02

Product Nr. 2650 Horizontal Processing Cube (Square) with Hole

- Material is normalized as GG 26 DIN.
- Workpiece can be applied on four faces.
- It is in compliance with Standard Coupling Equipment.
- M12 - M16 thread gap on it's surface is 50 ± 0.02.



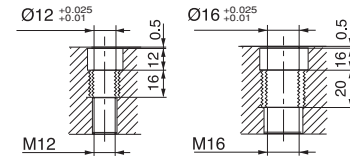
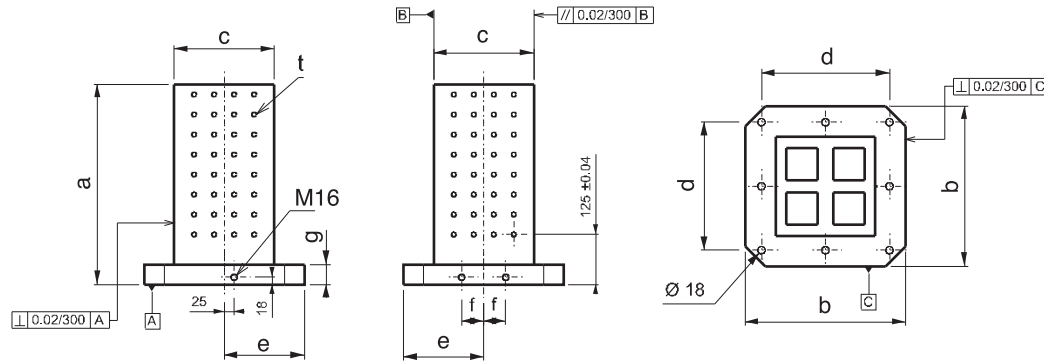
Referans Nr.	a	b	c	d	e	f	g	t	(kg)
2660-40025012	500	400	250	320	200	55	50	M12	170
2660-50030012	600	500	300	400	250	75	50	M12	230
2660-63035012	700	630	350	500	315	100	50	M12	380
2660-40025016	500	400	250	320	200	55	50	M16	168
2660-50030016	600	500	300	400	250	75	50	M16	228
2660-63035016	700	630	350	500	315	100	50	M16	376

Ürün Nr. 2660 Yatay İşleme Kulesi (Kare) Delikli

- Malzeme GG 26 DIN normalize edilmiştir.
- Dört yüzeyine iş parçası bağlanabilir.
- Standart bağlama ekipmanlarına uyumludur.
- Her yüzeye M12 - M16 diş merkez aralığı 50mm ±0.02
- Çelik burçlu dişler sertleştirilmiştir.

Product Nr. 2660 Horizontal Processing Cube (Square) with Hole

- Material is normalized as GG 26 DIN.
- Workpiece can be applied on four faces.
- It is in compliance with Standard Coupling Equipment.
- M12 - M16 thread gap on it's surface is 50 ± 0.02.
- It's steel bush threads are hardened.



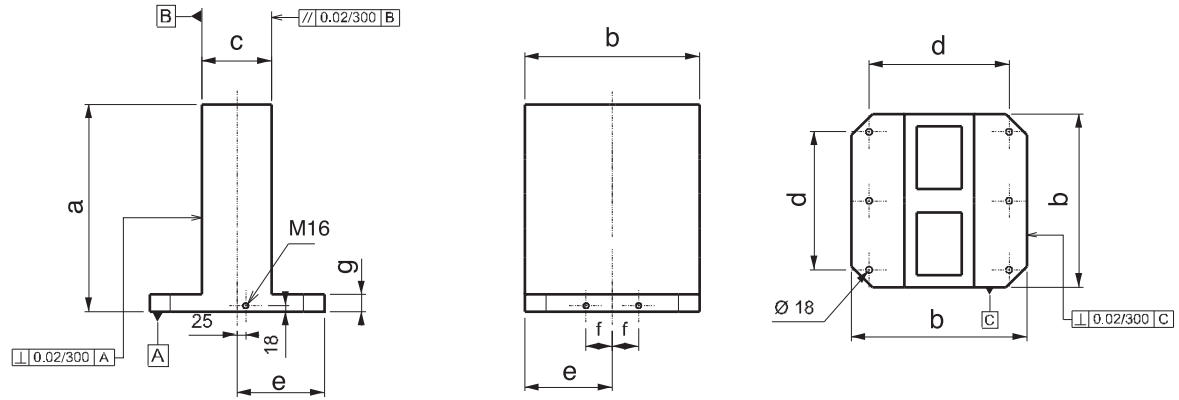
Referans Nr.	a	b	c	d	e	f	g	(kg)
2670-400150	500	400	150	320	200	55	50	175
2670-500200	600	500	200	400	250	75	50	265
2670-630250	700	630	250	500	315	100	50	484

Ürün Nr. 2670 Yatay İşleme Kulesi (Dikdörtgen)

- İsteğe göre uygulama yapılabilmesi için yüzeyler deliksizdir.
- Malzeme GG 26 DIN normalize edilmiştir.

Product Nr. 2670 Horizontal Processing Cube (Rectangular)

- Application on the surface according to desired way.
- Material is normalized as GG 26 DIN.



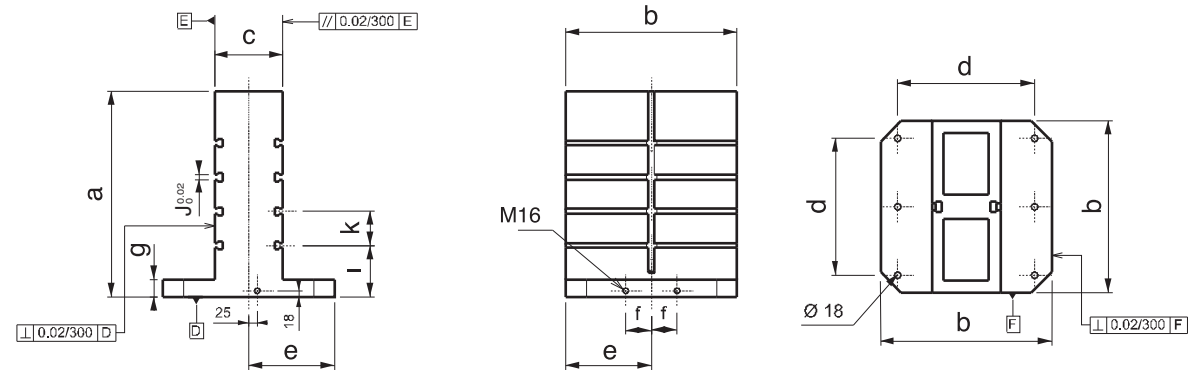
Referans Nr.	a	b	c	d	e	f	g	i	k (±0.02)	J (0.02)	(kg)
2690-40015014	500	400	150	320	200	55	50	150	100	14	165
2690-50020014	600	500	200	400	250	75	50	150	100	14	240
2690-63025014	700	630	250	500	315	100	50	150	125	14	455
2690-40015018	500	400	150	320	200	55	50	150	100	18	152
2690-50020018	600	500	200	400	250	75	50	150	100	18	238
2690-63025018	700	630	250	500	315	100	50	150	125	18	450


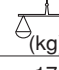
Ürün Nr. 2690 Yatay İşleme Kulesi (Dikdörtgen) "T" Kanallı

- İki yüzeyine iş parçası bağlanabilir.
- Standart bağlama ekipmanlarına uyumludur.
- "T" kanal ölçüsü 14mm - 18mm DIN 650 standartındadır.
- Malzeme GG 26 DIN normalize edilmiştir.

Product Nr. 2690 Horizontal Processing Cube (Rectangular) with "T" Slot

- Workpiece can be applied on four faces.
- It is in compliance with Standard Coupling Equipment.
- "T" Slot is in the standard of 14mm - 18mm DIN 650.
- Material is normalized as GG 26 DIN.



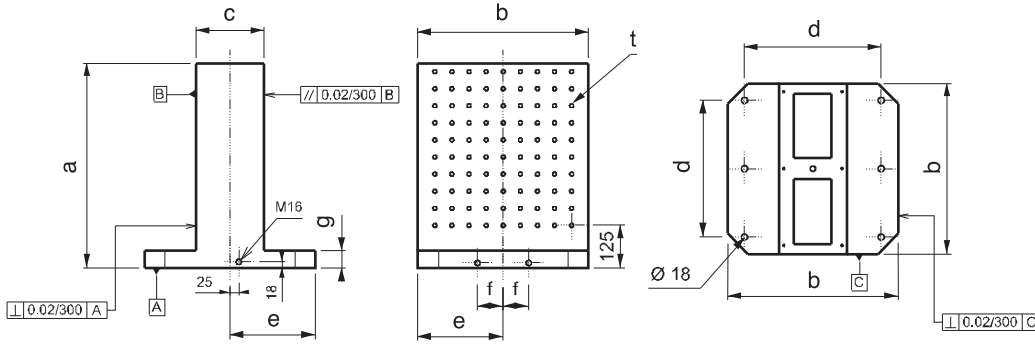
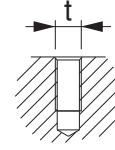
Referans Nr.	a	b	c	d	e	f	g		 (kg)
2710-40015012	500	400	150	320	200	55	50	M12	170
2710-50020012	600	500	200	400	250	75	50	M12	250
2710-63025012	700	630	250	500	315	100	50	M12	475
2710-40015016	500	400	150	320	200	55	50	M16	164
2710-50020016	600	500	200	400	250	75	50	M16	248
2710-63025016	700	630	250	500	315	100	50	M16	470

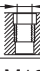
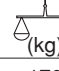
Ürün Nr. 2710 Yatay İşleme Kulesi Dikdörtgen (Delikli)

- Malzeme GG 26 DIN normalize edilmiştir.
- İki yüzeyine iş parçası bağlanabilir.
- Standart bağlama ekipmanlarına uyumludur.
- İki yüzeye M12 - M16 diş merkez aralığı 50mm ±0.02

Product Nr. 2710 Horizontal Processing Cube Rectangular (with Hole)

- Material is normalized as GG 26 DIN.
- Workpiece can be applied on two faces.
- It is in compliance with Standard Coupling Equipment.
- M12 - M16 thread gap on it's surface is 50 ± 0.02.



Referans Nr.	a	b	c	d	e	f	g		 (kg)
2720-40015012	500	400	150	320	200	55	50	M12	170
2720-50020012	600	500	200	400	250	75	50	M12	250
2720-63025012	700	630	250	500	315	100	50	M12	475
2720-40015016	500	400	150	320	200	55	50	M16	164
2720-50020016	600	500	200	400	250	75	50	M16	248
2720-63025016	700	630	250	500	315	100	50	M16	470

Ürün Nr. 2720 Yatay İşleme Kulesi Dikdörtgen (Delikli)

- Malzeme GG 26 DIN normalize edilmiştir.
- İki yüzeyine iş parçası bağlanabilir.
- Standart bağlama ekipmanlarına uyumludur.
- İki yüzeye M12 - M16 diş merkez aralığı 50mm ±0.02
- Çelik burçlu dişler sertleştirilmiştir.

Product Nr. 2720 Horizontal Processing Cube Rectangular (with Hole)

- Material is normalized as GG 26 DIN.
- Workpiece can be applied on two faces.
- It is in compliance with Standard Coupling Equipment.
- M12 - M16 thread gap on it's surface is 50 ± 0.02.
- It's steel bush threads are hardened.

